



Oswego Police Department

New Police Headquarters



Blueprints for the Week

December 1, 2017

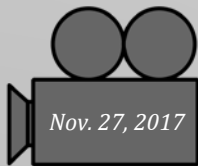
Editor – Deputy Chief Jim Jensen

Volume 2, Issue 12

Photo of the Week



This is a picture of the first floor interior which captures the future equipment room, report writing area and locker rooms. When complete, this will be a great space for our team!



Video Clip of the Week

This week's video is another time-lapse, containing 12 hours of footage, condensed into a 2 minute clip. They are working tirelessly to wrap up the outside of the building before the weather gets too cold!

Follow the link below to view:

https://youtu.be/Qt9MBgz_L3Q

Comments or questions about this publication can be directed to Deputy Chief Jim Jensen.

Oswego Police Department
3525 Route 34
Oswego, Illinois 60543
Phone: 630-551-7300
Fax: 630-554-9379

Move In Schedule

The current project schedule update is showing an Owner move in date of October 15, 2018!

Project Safety

As of Tuesday October 31, 2017 the building project has had 149 safe work days with no injuries, recordable incidents, or lost time accidents to date! This safety record is a testament to the on-going hard work and dedication to safety that is put forth every day by the men and women working on our project. We owe it to the continuing education and safety conversations that are discussed on a daily basis!



Masonry Walls

Crews began the construction of the holding facilities booking counter. This counter will house three work stations providing Officers with the ability to process three inmates at one time.

Approximately 80% of all of the interior masonry walls are complete!

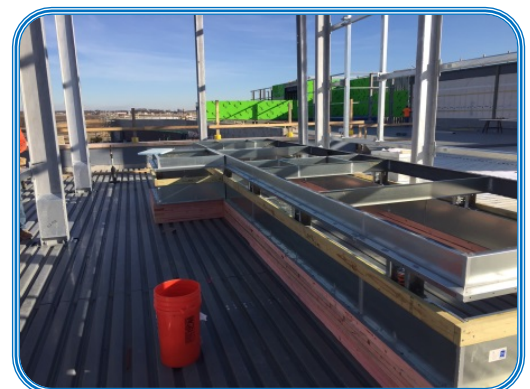


Steel

With the cold fast approaching, crews from AREA Erectors were hoping to install the last of the steel this week. Crews were able to complete the steel foundation around two of the exterior mechanical units.



Steel walls surrounding one of the mechanical units.



This mechanical pad will house one of three extremely large mechanical units on this building. This installation was quite complex and very time intensive.